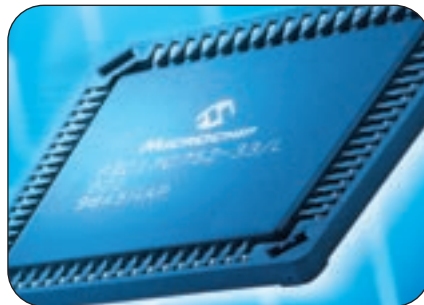




Global Intercom *Hardware*



Commend – the Intercom specialist – offers customised solutions for intercom and control desk systems. The hardware described within and the associated software have been designed to provide for a wide range of applications and projects ranging from simple call station/master station relationships to extensive integrated and networked solutions. Additional customised forms of control desks and call stations for complete, customer-specific solutions can be realised.



GLOBAL INTERCOM BY COMMEND.

The world of perfect communications technology: Global Intercom by Commend.

Seeing, speaking, hearing, controlling and reporting: as a specialist in Global Intercom and system integration, Commend plans and implements communication systems that set new standards in quality. For nearly 30 years, Commend's intercom systems have been employed successfully worldwide. These complete, modular systems are tailored to meet individual requirements and customer wishes – and are extremely easy to operate. Additionally, all systems can be upgraded with components of future communications technologies.

Advice, implementation, service: with Commend everything comes from one source – the step into tomorrow's communications technology, today.

Overcoming communications borders between people is the task that Commend has set itself. Intercom is people-for-people technology. For ideal exchange of information and more security through communication.



ISO 9001
Certificate no.
20 100 6237

Our products and software solutions are subjected to strict quality controls and are certified in accordance with ISO 9001. Each product is developed and produced in accordance with these quality directives.

All weights including packaging. No liability will be assumed for printing mistakes and errors.

Systems leading towards comprehensive communications solutions.

Commend manufactures communication systems. From the simple two-way intercom to complex communications solutions. The Commend hardware range for perfect, complete customized solutions – a well thought-out modular system, designed and engineered for people.



Desktop Stations

DESKTOP MASTER STATIONS SERIES 711

Desktop Master Stations with digital voice and data transmission via 2 wires from the station to the central. Developed with standard ISDN-components and produced using the latest SMD-technology.

Applications: Office environments with high standards, extended display information with 14-digits/8-rows graphic display. Also available with goose-neck microphone.

EE 711

Master Station, 2-wire, integrated handset facility, timeless dynamic design.

Weight: 458 g

Dimensions: 66 x 240 x 58 mm

Colour: Light grey, Black

EE 772

Mini-control-desk or command station, 2-wire, with goose-neck microphone.

Weight: 777 g

Dimensions excl. Gooseneck:

179 x 240 x 58 mm

Colour: Black



EE 711



EE 772

DESKTOP MASTER STATIONS SERIES EE 211 (2-WIRE) AND EE 411 (4-WIRE)

EE 211/EE 411

Master Station, 2-wire, with integrated handset facility.

EE 411 identical but 4-wire.

Available as EE 201/EE 401 without handset facility.

Weight: 389 g

Dimensions: 66 x 230 x 55 mm

Colour: Light grey, Black

EE 272/EE 472

Mini control desk or command station, 2-wire, with goose-neck microphone.

EE 472 identical but 4-wire.

Weight: 725 g

Dimensions excl. Gooseneck:

179 x 230 x 57 mm

Colour: Light grey, Black

EE 211/EF 401

Slave station, 2-wire, with reduced dialling possibilities (T, O, X), handset facility. EF 401 identical but 4-wire and without handset facility.

Weight: 349 g

Dimensions: 66 x 230 x 55 mm

Colour: Light grey, Black

Desktop Stations with digital voice and data transmission via 2 wires resp. analogue voice transmission and digital data transmission via 4 wires. Produced using latest SMD-technology. Series 211 and 411 have an alphanumeric display, also available as series 400 (4-wire) without display (EE 400, EE 470, EF 400).

Applications: Office environments. Also suitable for flush mounting into desks, panels or walls. Also available with goose-neck microphone.



EE 211/EE 411



EF 211/EF 401



EE 272/EE 472

Wallmount and Door Stations

WALLMOUNT STATIONS

Suited for many areas of internal communication. For flush-mounting or integration into consoles and desks.

Applications: In environments where conversations are possible at normal volume. The Master Stations Series EE 211 and EE 411 can also be adapted for flush-mounting or integration into consoles and desks by using special adaptors or kits (see accessories, page 11).

EE 442. Flush-mounted Master Station with display and membrane keypad, resistant to antiseptics.

Weight: 919 g

Dimensions: 110 x 242 x 63 mm

Front plate: 264 x 132 mm

Colour: Light grey

EF 151. Slave Station for mounting on walls, with one programmable button and electret microphone.

Weight: 500 g

Dimensions: 75 x 178 x 74 mm

Colour: Light grey

EE 220/EE 420. Master Station, 2-wire (EE 220) or 4-wire (EE 420) with mounting bracket and coiled handset cord.

Weight: 442 g

Dimensions: 73 x 232 x 57 mm

Colour: Light grey, Red, Black

EG 501. Loudspeaker with built-in amplifier and external power supply. EG 101 without amplifier.

Weight: 900 g

Dimensions: 141 x 250 x 81 mm

Colour: Light grey

EF 501. Dialling module with built-in electret microphone and two programmable call buttons. Designed for use with the loudspeakers EG 501 / EG 101 for use in workshops, warehouses etc.

Weight: 200 g

Dimensions: 141 x 55 x 70 mm

Colour: Light grey



EE 442



EF 151



EE 220/
EE 420



EG 501/EG 101



EF 501

DOOR STATIONS

We offer special Intercom Modules for intercom solutions in access and transit areas. All modules can be integrated into Siedle Vario housings. They can be mounted independently or combined to form more complex intercom stations.

Applications: For intercom solutions in access areas. Available as surface-mount, flush-mount or for integration in columns, letterbox-systems etc. Cameras and door-access modules can be integrated.

ET 661. Loudspeaker & Microphone module, 4-wire, with electret microphone and duplex controller.

Weight: 150 g

Dimensions: 99 x 99 x 9 mm

Colour: White, Titan, Silver



ET 661



Composite Door Station

Composite Door Station for use inside or outside buildings. With a call button from the Siedle Vario product range and a loudspeaker & microphone module ET 661.

Industrial stations

LIGHT INDUSTRIAL STATIONS

This series includes modules for flush or surface-mounting. They are available in versions with electret or noise-cancelling microphones, with or without amplifier, with or without automatic volume adjustment. The housings are made from high impact resistant ABS, colour light grey. Power supply 24 V AC/10 VA.

Applications: Light industrial environments like garages and workshops etc.

EE 571. Dialling module with silicone-encapsulated keypad, noise-cancelling microphone, 4 W amplifier with high-low-volume control. **EE 561** as EE 571 but with electret microphone.

EE 570 and **EE 560**, each without amplifier.

Weight: 541 g (EE 571/EE 561)

Dimensions: 75 x 178 x 91 mm (EE 571)

75 x 178 x 79 mm (EE 561)

IP rating: IP 65

EG 151. Loudspeaker module for EE 571.

Weight: 465 g

Dimensions: 75 x 178 x 91 mm

IP rating: IP 54

RB 36-04. Sound projector with 5 W, 4 Ohm, 100 V, with switch (adjustable) and 2 m cable.

EF 571. Dialling module with restricted keypad (two programmable call buttons, talk and cancel buttons), noise-cancelling microphone. **EF 561** as EF 571 but with electret microphone.

Weight: 516 g (EF 571/EF 561)

Dimensions: 75 x 178 x 91 mm (EF 571)

75 x 178 x 79 mm (EF 561)

IP rating: IP 65

HP 10. Horn-loudspeaker from ABS, weather-resistant, with 10/15 W, 20 Ohm.



EE 571/EG 151



EE 561



RB 36-04



EF 571



HP 10



EF 561

Explosion Proof Stations

EXPLOSION PROOF STATIONS SERIES EX 7000

Specially made for use in hazardous areas. Certified Zone I, Group IIB T4, EExd ia.

Certification Standard: CENELEC EN 50014/EN 50018/EN 50020.

EX 7711. Ex-Station, 2-wire, with graphic display. Only two wires to the central. Produced using SMD technology.

EX 7411. 4-wire with LED Display

IP rating: IP 66

Power supply:

locally powered 24 V DC, 110, 220, 230 V AC, 50/60 Hz

Weight: ca. 10 kg

Dimensions: 190 x 500 x 120 mm

- Extremely rugged housing (IP 66)
- Integral amplifier and horn-loudspeaker
- 8-Row/14-Column Graphic display (EX 7711), LED Display (EX 7411)
- Large keypad, especially suited for gloved hands
- Clearly visible luminous keypad
- Modular plug-in assemblies for ease of maintenance
- Hypercardioid noise-cancelling microphone
- Volume electronically adjustable via keypad (EX 7711)
- Auxiliary items available, e.g. vandal resistant handsets, foot and knee operated push-to-talk switches, ear-defender headsets etc.



EX 7711

Industrial Stations

HEAVY INDUSTRIAL STATIONS

Specially designed for harsh and rugged environments in heavy industry. All buttons of these stations are programmable or can be assigned with specific functions.

Applications: Heavy industry, chemical industry, steel works etc. – anywhere where noise, dirt and humidity create problems.

IP rating: IP 65

Weight: 1.6 kg

Dimensions: 175 x 312 x 142 mm

Colour: Orange

EE 6999. Basic housing for three modules, complete with electronics.

EDI 600. (not shown)

Basic housing without electronics.



EE 6999

THE MODULAR SYSTEM

EM 602. Keypad with buttons 1 to 6 as part of a full keypad.

EM 603. (not shown) for buttons 7 to 0, T, X.

EM 650. Loudspeaker module.

EM 600. Dummy module to fill empty module space or for fitting special items.

EM 606. Button module with direct call buttons that can be custom-labelled.

EM 670. Module with noise-cancelling microphone. EM 660 with electret microphone.

DC 600. DC module for 60 V power supply.

Minimum power requirement:
44 V DC

The modular construction provides a fully flexible solution for virtually all possible station combinations. The stations can be extended to up to 18 buttons without additional cabling. Special bumper bars provide additional protection. An internal relay can be programmed for one of several functions.



EM 602



EM 650



EM 600



EM 606



EM 670



DC 600



HP 15

STANDARD-TYPES

EE 6147

Industrial Station with 6 programmable direct call buttons and noise cancelling microphone.

EE 61AB

Emergency Call Station with large call button and white active lamp.

EE 6236

Industrial Station with programmable full keypad and electret microphone.

HP 15

Horn-loudspeaker made from ABS, weather resistant, with 15/20 W, 20 Ohm, 100 V.



EE 6147



EE 61 AB



EE 6236



The Control Desk System

OPERATING PHILOSOPHY

The Control Desk System realises multi-functional system solutions in Control, Security and BMS rooms. It provides a constant overview of the conditions and events taking place. From one uniform control panel it provides, at the touch of a button, control and monitoring of the most widely varying communication equipment such as intercom, door openers, barrier controls, video monitoring, mobile radio, pager, PA, emergency call points, alarms etc. With the Control Desk System it is possible to control and monitor a number of security and communication systems via one common and uniform desk arrangement.



CONTROL CONSOLES

EM 202

Button/LED module with 18 programmable buttons, each with a LED indicating status information or calls. The button labels can easily be altered.

EM 206

Intercom-module with full keypad and integrated loudspeaker. Ideal for accessing intercom functions and programming function keys.

EM 205

Multifunction module with four, 4-digit displays and 6 predefined function buttons.

Module dimensions: 80 x 190 x 35 mm



EE 580

Basic housing for operator console (includes integral electronics). Shown with intercom-module EM 206, multi-functional display module EM 205 and button/led module EM 202. Available as EE 580 A with goose-neck microphone or EE 580 C with electret microphone. Also suitable for flush mounting into consoles, wall panels etc. Up to 127 Control Desks can be connected to a single System.

Dimensions: 245 x 324 x 68 mm

Colours: White, Black



EM 208

Handset with desktop cradle for control desks.

CONTROL DESK VISUALISATION

The Graphic User Interface of the Control Desk System. The software programme Comwin © runs on standard PCs (Pentium © required) under Windows 98/95 (© Microsoft) or Windows 3.11 (© Microsoft). It was developed for stand-alone solutions. Three types of licences are available.



COMWIN 128

for up to 128 icons.

COMWIN 228

for up to 228 icons.

COMWIN OFFEN

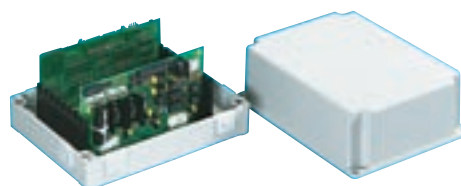
as open system for up to 2.000 icons (30 different types).

A standard RS 232-interface is used to link the PC and the SA101-System. Up to 127 stand-alone PCs can be integrated into one Control Desk System.

THE CONTROL UNIT

SA 101

The data concentrator of the Control Desk System with network processor and operating system. Three plug-in slots for I/O cards and various interfaces for data transmission.



Up to 127 control units can be integrated in a 2-wire network. All cabling is monitored. The local input and output of data is executed using interface cards.

Dimensions: 225 x 177.5 x 110 mm

Counter Intercoms

Counter Intercom Systems are specially designed for the special requirements of through-glass communications in different acoustic environments. The ideal counter intercom for cashiers, guards, reception areas, security personnel etc. A clean solution for sterile environments, security door interlocks or as a simple solution for acoustically separated zones.



GEC 480

Desktop Counter Intercom System with gooseneck-microphone. Built-in speech processor for high volume open-duplex speech. **Delivery includes** desktop station, microphone MIC-Q 400, wall-socket, RJ11-cable and mains transformer. Any 4 Ohm or greater loudspeaker can be used for the customer area.

Weight: 1.182 g

Dimensions excl. gooseneck:
179 x 230 x 57 mm

Length of gooseneck: 440 mm

Colour: Black



GEC 480



GEC 380

GEC 380

Counter Intercom System with one-touch-operation, designed for flush mounting into tables or desks. **Delivery includes** desktop station, wall-socket, RJ11-cable and mains transformer. **Frontplate:** polished aluminium, 3 mm

Weight: 633 g

Dimensions excl. gooseneck:
130 x 190 mm

Depth: 26 mm

Length of gooseneck: 335 mm

Weather-resistant MIC 480

Microphone for installation in glass panes or panels.

Dimensions: 14 x 20 mm

Hole size: Ø 8 mm



MIC 480



MIC-Q 400

MIC-Q 400

Directional mouse-microphone for surface-mounting.

Dimensions: 42 x 21 x 13 mm

AL 10

Weather-resistant wall-mounted loudspeaker, 4 Ohm, ideally suitable for GEC 480/GEC 380.

Dimensions: 100 x 300 x 96 mm
Colour: White, Black



AL 10

Intercom Modules

Intercom Modules are designed for planning and realising Intercom Stations according to customer specifications. Shape of housing, buttons, material, protection rating etc. can thus be adapted individually.

Applications: For all situations in which Intercom Stations are permanently mounted, e.g. at doors, gates, pay-on-foot-machines, toll barriers (vehicle and pedestrian), elevators etc.

ET 411

Intercom Module, 4-wire, for Intercom Stations with display, connection for loudspeaker, 15-button row/column keypad, handset and privacy switch.

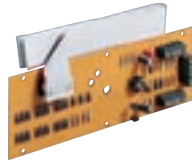
Dimensions: 73 x 70 x 24 mm



ET 505

Intercom Module, 4-wire, with microphone pre-amplifier, for connection of a microphone, loudspeaker and 12-call buttons or keypad.

Dimensions: 55 x 157 x 15 mm



ET 509

Simplex-Intercom Module, 4-wire, with loudspeaker and microphone and connection of one call button.

Dimensions: 85 x 55 x 20 mm



ET 570

Intercom Module, 4-wire, with amplifier (2 W/8 Ohm) and MIC 480.

With connection for a call button and a loudspeaker (internal/external).

Dimensions: 87.5 x 109 x 40 mm



ET 706

Intercom Module, 2-wire, Audio and I/O distributor specifically designed for intercom stations in high-security locations like prisons, police stations etc. with numerous connection possibilities for optimum ease of installation, operation and monitoring.

Dimensions: 92 x 92 x 57 mm



ET 711

Intercom Module, 2-wire, with graphic display for panel mounting.

Dimensions Keypad/Display:

172 x 79 x 23 mm

Dimensions Loudspeaker PCB:

83 x 57 x 35 mm

Connection Cable: 150 mm



ET 502

Intercom Module, 4-wire, with microphone and pre-amplifier, for connection of a call-button and loudspeaker.

Dimensions: 65 x 55 x 35 mm

ET 508

Intercom Module, 4-wire, for connection of a microphone, loudspeaker, LED and call buttons 4, 5, T, 0, and X.

Dimensions: 50 x 50 x 18 mm

ET 562

Intercom Module, 4-wire, with duplex-controller, microphone, loudspeaker, LED and rear-cover. Connections for external call buttons.

Dimensions: 87.5 x 109 x 40 mm

ET 601

Module, 4-wire for Industrial Stations and special applications.

Dimensions: 125 x 265 x 28 mm

ET 808

Intercom Module with digital sound processor, 2-wire, microphone-loudspeaker surveillance via DSP, for connection of a microphone, loudspeaker, 18-button row/column keypad or three single buttons, 2 floating inputs, two relay outputs. One MIC 480 is included with the ET 808. Prepared for future DSP functions.

Dimensions: 65 x 130 x 24 mm

ET 8E8A

Remote Input/Output-Unit, 8 inputs (5 levels), 8 outputs with four 4 make contacts and 4 changeover contacts. Pluggable screw terminals up to 1.5 mm². Status-LEDs for all inputs and outputs. For wallmounting or mounting in 19" racks (on DIN-rail).

Dimensions (incl. screw terminals):

105 x 106 x 58 mm

Accessories

The perfect add-ons for the Commend Products: a wide range of amplifiers, power supplies and other accessories complete our product range.

KE 510

8 W amplifier low impedance with volume and treble control, protected against short-circuit and overload. Connects to an intercom loudspeaker output or CD terminals of a subscriber card. With input transformer

Dimensions w/o transformer:
75 x 177 x 68 mm



KE 520

20 W amplifier low impedance and 100 V line with volume and treble control, protected against short-circuit and overload. Connects to an intercom loudspeaker output or CD terminals of a subscriber card.

Dimensions w/o transformer:
140 x 140 x 70 mm

EW 401

Wallmount-bracket for EE 400 Series Stations.

Dimensions: 235 x 73 x 58 mm

Weight: 100 g

Colours: Light grey, Black



ET 504

Module with suspended microphone for quiet areas.

IP rating: IP 51

Microphone Cable: up to 4 m

Weight: 500 g

Dimensions: 75 x 178 x 68 mm

PA 501

Power supply with 4 x 24 V AC/40 VA outputs for Centrals, Amplifiers and Industrial Stations.

Dimensions: 130 x 90 x 100 mm

PA 101 (not illustrated)

Power transformer identical to PA 501 with 1 x 24 V AC/40 VA.

Dimensions: 87 x 61 x 60 mm



EK 4FF

Kit for flush-mounting EE 211/EE 411 Series Stations in desks or walls.

Weight: 600 g

Dimensions of the back box:

105 x 255 x 55 mm

Dimensions of the plate:

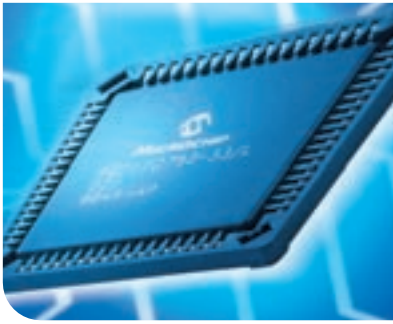
120 x 270 x 16 mm

PA 700

Power supply with 24 V AC/80 VA output for Centrals, Amplifiers and Industrial Stations, including mounting-kit for 19" racks/DIN rails.

Dimensions: 107 x 75 x 65 mm





Intercom Centrals

INTERCOM COMMUNICATIONS SERVERS

One element of our centrals' philosophy envisages that our Intercom Systems should be modular, freely configurable into network structures, programmable and expandable. All Intercom Centrals are designed to be Interface Managers.

They offer a wide range of expansion and networking possibilities. External systems can also be integrated into a system platform using interface cards which execute speech, control and event signalling tasks..

The highest operational reliability and compact design are achieved through modern SMD-technology. Due to the modular and clear concept of the operating system new applications can be realised quickly and easily and new demands can be responded to immediately.



SYSTEM CENTRAL GE 700 (2-WIRE/4-WIRE)

Dimensions:
483 x 133 x 229 mm
Weights (without cards): 5,800 g
Mounting: 19"-rack (3 U)

The GE 700 Central is a fully digital Intercom Server in 19" rack design. Up to 120 centrals can be integrated into a network. 2-wire and 4-wire Intercom Stations can be used as desired. Additional plug-in cards offer additional I/O functionality, e.g. inputs for audio channels, alarms, relay-outputs, RS 232/422/485 and interfaces for telephones, ISDN, Mobile Radio etc.

The GE 700 central housing offers space for 17 plug-in cards: one for the processor card, one for the linking card and one for the power-supply card (included in each GE 700), plus twelve slots for subscriber or interface cards and two additional slots for interface cards only. The system can easily be expanded by adding more shelves linked via the G7-GEV card.

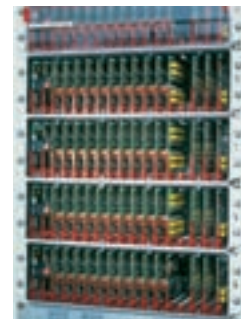
The dimensions of all GE 700 cards are standardised to Eurocard format.



The GE 700 basic unit includes an audio input for music or alarm. Each central has 2 inputs for floating (volt-free) contacts, 2 relay-outputs and one programming port though an entire multi-shelf and distributed network installation can be programmed from a single shelf or remotely via a 56 K modem.

The design of the housing and of the connectors fully meet the requirements of a 19" rack. Modular connection boards plug in through the rear of the motherboard to provide easy connection to various, currently used connector technologies. They can also be easily adapted to new techniques as they become available.

Various connection boards are currently available with 9 and 37-way D-Submin sockets, RJ 45 sockets and screw-terminals.



Intercom Centrals

SYSTEM CENTRAL GE 200 (2-WIRE/4-WIRE)

Compact and designed for networks. The GE 200 Central is ideal for Intercom Systems where smaller units need to be linked together in a network. The network can be the public telecom net, 2-wire-networks, ISDN or fiber-optic lines with multiplexers or media-converters. In such a network, each GE 200 works as an independent Communications Server controlling several interfaces.

The basic central has five plug-in slots: slots 1 to 4 for subscriber-cards (up to 16 subscribers) or interface cards. Slot A for interface cards only.

The PCB has an input for music/alarm, 2 inputs for floating (volt-free) contacts, 2 relay-outputs and one programming port/remote servicing interface. Both 2-wire and 4-wire Intercom Stations can be connected.



Weight: 2,210 g
Dimensions: 310 x 210 x 77.5 mm
Colour: Light grey
Mounting: Wall-mounting

COMPACT CENTRAL GE 100 (4-WIRE)

The GE 100 central is a microprocessor-controlled, stand-alone Intercom Server for up to 32 subscribers in one location. Depending on the subscriber card, they can operate in simplex, duplex or open duplex mode. Additional plug-in cards are available for I/O functionalities.

The basic central offers the same plug-in and connection possibilities as the GE 200 though only 4-wire Intercom Stations are supported.



Weight: 2,280 g
Dimensions: 310 x 210 x 77.5 mm
Colour: Light grey
Mounting: Wall-mounting

EXTENSIONS FOR THE GE 200/GE 100

EXPANSION HOUSING GE 200/GE 100

If more than 5 plug-in slots are required, the GE 200/GE 100 centrals can be expanded with the GE 200/GE 100 Expansion Housings. Slots 5 to 8 for subscriber cards (subscribers 17 to 32) or interface cards. Slot B only for interface cards.

INTERFACE HOUSING GEI 200/GEI 100

Plug-in cards for the GE 200/GE 100 in the size of Eurocards are connected via the GEI 200/GEI 100 housing. Two such cards can be used in the GE 200, one in the GEI 100.

All Expansion Housings are connected to the basic central via a flat-ribbon cable.

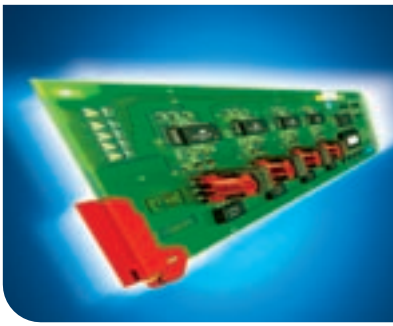


Basic Central (bottom) with Expansion Housing (center) and Interface Housing (top).

Weight: 2,230 g (GEZ 100)
2,160 g (GEZ 200)
1,077 g (GEI 100/GEI 200)

Dimensions:
310 x 210 x 77.5 mm

Colour: Light grey
Mounting: Wall-mounting



Plug-In Cards

SUBSCRIBER CARDS

In an Intercom System, the subscriber cards control the speech communication and all subscriber-relevant controls. A front-end processor on each card controls all card related features. Subscriber cards are available with four different feature levels (A, B, C and D), the higher-letter cards always include the features of the lower ones plus additional ones. As we are continually developing new features and facilities, a list of the features and the cards required is available on request.



G2-GED-4

2-WIRE SUBSCRIBER CARDS

Subscriber cards for connecting up to 4 subscribers, each via 2-wires. In the GE 200 and GE 700 Centrals one conversation is possible for every two subscribers (non-blocking).

G2-GED-4. Subscriber card for GE 200 (with the feature levels B, C and D).

G7-GED-4. Subscriber card for GE 700 (with the feature levels B, C and D).

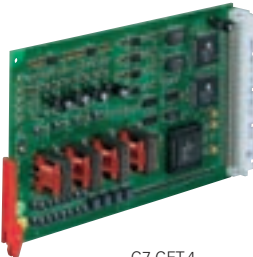
4-WIRE SUBSCRIBER CARDS

Subscriber cards for connecting up to 4 subscribers, each via 4-wires. In a GE 100, two voice-switched duplex, six full duplex or twelve simplex conversations are possible simultaneously. In the GE 200 and GE 700 Centrals the number of conversations depends on the number of channel cards and audio lines available.

G1-GET-4. Subscriber card for GE 100 (with the feature levels A, B, C and D).

G2-GET-4. Subscriber card for GE 200 (with the feature levels B, C and D).

G7-GET-4. Subscriber card for GE 700 (with the feature levels B, C and D).



G7-GET-4

CHANNEL CARDS

Channel cards are required when analogue systems like PA or mobile radio and 4-wire-Intercom Stations are connected to the Centrals GE 200 and GE 700. They convert the digital signals of the centrals into analogue signals for the other systems or stations.

G2-GEK2-3. Channel card for GE 200 with 2 duplex controllers and 3 AD/DA converters.

G7-GEK3-4. Channel card for GE 200 with 3 duplex controllers and 4 AD/DA converters.

IN/OUTPUT CARDS

They are used to monitor floating (volt-free) contacts and/or control output functions via floating (volt-free) relay outputs, e.g. door openers. All inputs can be monitored for line failures.

8 INPUTS/8 OUTPUTS

Plug-in cards with 8 inputs for floating (volt-free) contacts with or without line fault monitoring and 8 relay outputs (60 W resp. 125 VA, 2 A). Functionality depends on configuration and the subscriber card type used.

G1-8E8A. In/Output card for GE 100.

G2-8E8A. In/Output card for GE 200.

G7-8E8A. In/Output card for GE 700.



G1-8E8A

16 INPUTS

Plug-in cards with 16 inputs for floating (volt-free) contacts with or without line fault monitoring.

G1-16E. Input card for GE 100.

G2-16E. Input card for GE 200.

G7-16E. Input card for GE 700.



G7-16A

16 OUTPUTS

Plug-in cards with 16 relay outputs.

G1-16A. Output card for GE 100.

G2-16A. Output card for GE 200.

G7-16A. Output card for GE 700.

INTERFACE CARDS

For integration of and connection to other systems, e.g. telephones, computers, mobile radio etc.

V24 CARDS (STANDARD)

Bi-directional data port interface card with standard Commend Protocol for connecting to other systems. With two RS 232 ports, one of which can be configured as RS 422 or RS 485.

G1-V24. V24 card for GE 100.

G2-V24. V24 card for GE 200.

G7-V24. V24 card for GE 700.



G2-V24

Plug-In Cards

V24 CARDS (PROGRAMMABLE)

Bi-directional data port interface card with programmable protocol converter. This is designed for adapting the standard Commend Protocol to other systems. With two RS 232 ports, one of which can be configured as RS 422 or RS 485. This card is Eurocard-size, so a GEI 200 housing is needed when used with the GE 200.

G7-V24-PRO. V24 card, programmable, for GE 200/GE 700

TELEPHONE INTERFACE

Interface card for connecting an Intercom Central with a standard analogue extension port of a PABX, a direct public telephone line or a pager system.

G1-TEL. Telephone interface for GE 100.

G2-TEL. Telephone interface for GE 200.

G7-TEL. Telephone interface for GE 700.

RADIO INTERFACE

Interface card for connecting an Intercom Central with a selective-call radio system with 5-tone selective calling for both incoming and outgoing calls. ZVEI and CCIR Selective Call formats are supported. The connection takes place with a G7-V24-PRO card included with the delivery. This card is Eurocard-size, so a GEI 200 housing is needed when used with the GE 200.

G7-SELCALL. Radio interface ZVEI, CCIR for GE 200/GE 700.

NETWORKS

For building Intercom Networks via the public telephone system, 2-wire networks, ISDN or multiplexers and media converters.

ANALOGUE LEASED LINES

Connection card (tieline) for GE 100, GE 200 and GE 700. Fixed connection to one speech channel on 2-wire or 4-wire transmission, with automatic line adjustment (2-wire) through signal processors and PC-programmability.

G1-GEL. Tieline card for GE 100.

G2-GEL. Tieline card for GE 200.

G7-GEL. Tieline card for GE 700.

2-WIRE HDSL (2 MBIT)

High-speed data link connection card for networking GE 200 and GE 700 Intercom Centrals via 2-wire connections (multichannel HDSL). 2 Mbit Data transmission allows up to 12 simultaneous conversations (depending on line specifications) and I/O controls. This card is Eurocard-size, so a GEI 200 housing is needed for use with the GE 200.

G7-CNET-W. 2-wire-network card for GE 200/GE 700.

ISDN

High-performance connection card for networking GE 200 and GE 700 Intercom Centrals over the S0-interface of a basic rate ISDN line. This card is Eurocard-size, so a GEI 200 housing is needed for use with the GE 200.

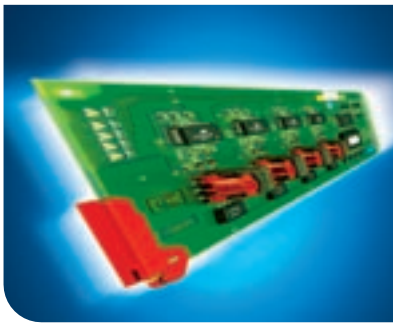
G2-S0-I. ISDN-network card for GE 200, one connection.

G7-S0. ISDN-network card for GE 700, two connections.

E1 HDSL MULTIPLEXERS/MEDIA CONVERTERS

High-speed data link connection card for networking GE 200 and GE 700 Intercom Centrals using multiplexer connections or media converters, e.g. with fiber-optic lines, in accordance with the E1 standard. This card is Eurocard-size, so a GEI 200 housing is needed for use with the GE 200.

G7-CNET-E1. E1-network card for GE 200/GE 700.



G7-V24-PRO



G7-TEL



G1-GEL



G7-S0



G7-CNET-E1



COMMEND INTERNATIONAL GMBH

A-5071 Salzburg-Wals · Hölzlstraße 563 · Telefon +43-662-85 62 25-0
Fax +43-662-85 62 26 · office@commend.com · www.commend.com
Global Intercom Hardware, CI E, 12/01